



Any Mission, Any Weather, Any Where

Welcome Aboard

Sector Sault Sainte Marie



October 2020

Sector Sault Sainte Marie is responsible for all missions on Lake Superior, the St. Marys River, Northern Lake Michigan, and Northern Lake Huron, an area that encompasses 1,850 miles of shoreline and 560 miles of international maritime border with Canada. Sector Sault Sainte Marie has oversight of seven Coast Guard Stations/Units that conduct/support all Coast Guard missions. The Sector responds to approximately 300 Search and Rescue cases and performs over 2,000 vessel boardings annually. The Sector's two Aids to Navigation Teams (ANT) are responsible for the proper operation and correct positioning of over 561 navigational aids, including the placement/removal of 148 seasonal aids. The Sector operates the St. Marys River Vessel Traffic Service, which annually directs the nation's largest domestic icebreaking effort through Operation Taconite. Sector Sault Sainte Marie is comprised within the Ninth Coast Guard District, located in Cleveland, Ohio, which is responsible for all Coast Guard operations throughout the five Great Lakes and the Saint Lawrence Seaway, including 6,700 miles of shoreline and 1,500 miles of the border with Canada.

Sector Leadership



CAPT Anthony Jones
Sector Commander



CAPT Amy Florentino
Deputy HURON



MKCM Robert Linn
Command Master Chief



BMCS Brandon Kuske
SERA



CDR Matthew Waller
SRO

Michigan's birthplace, **Sault Sainte Marie**, is a land of vast natural beauty that forms the nexus between countries, lakes, and cultures. The **state's first city** is found on the shores of the St. Marys River – a vital waterway that connects the Great Lakes. With a rich history comprised of Native American, French and British influences, the community affectionately known as "**The Soo**" offers much to see and do. Sample fresh caught whitefish, hike to an icy waterfall, stretch out on a pristine beach, or visit historic lighthouses. Soak up the architecturally significant structures and spend an evening enjoying a lively nighttime scene that includes gaming, concerts, dining and a brewery.

<https://www.saultstemarie.com>



Coast Guard Sector Sault Sainte Marie Command Philosophy

"Any Mission, Any Weather, Anywhere"

To the men and women of Sector Sault Sainte Marie:

It is our honor and privilege to serve you as Sector Sault Sainte Marie's Command Cadre. The foundation of this Command Direction is our Core Values of Honor, Respect, and Devotion to Duty; our Commandant's Guiding Principles of Ready, Relevant, and Responsive; and the Ninth District Commander's Intent of Character, Professionalism, and Resilience.

INSPIRE: We hold our core values dear and strive to live them daily, modeling the way for each other and the community in which we serve. We continually improve and strive for excellence, working as a team to ensure that --- together we are better. We foster a climate where feedback is expected, and seen as a gift rather than a personal criticism. We do not ignore behavior that we know is wrong. The standards we walk past are the standards we accept/condone.

FOSTER: We foster an atmosphere of trust and high standards, where honest mistakes are a vehicle for growth. We aspire to the highest standards, where violations of our core values are not tolerated. We give people the latitude to take warranted risks and come up innovative solutions. We empower them to lead and encourage them to exceed our expectations. We believe in a culture of safety and look out for one another. We strive for open lines of communication up and down the chain --- bad news does not get better with age and praise does have an expiration date.

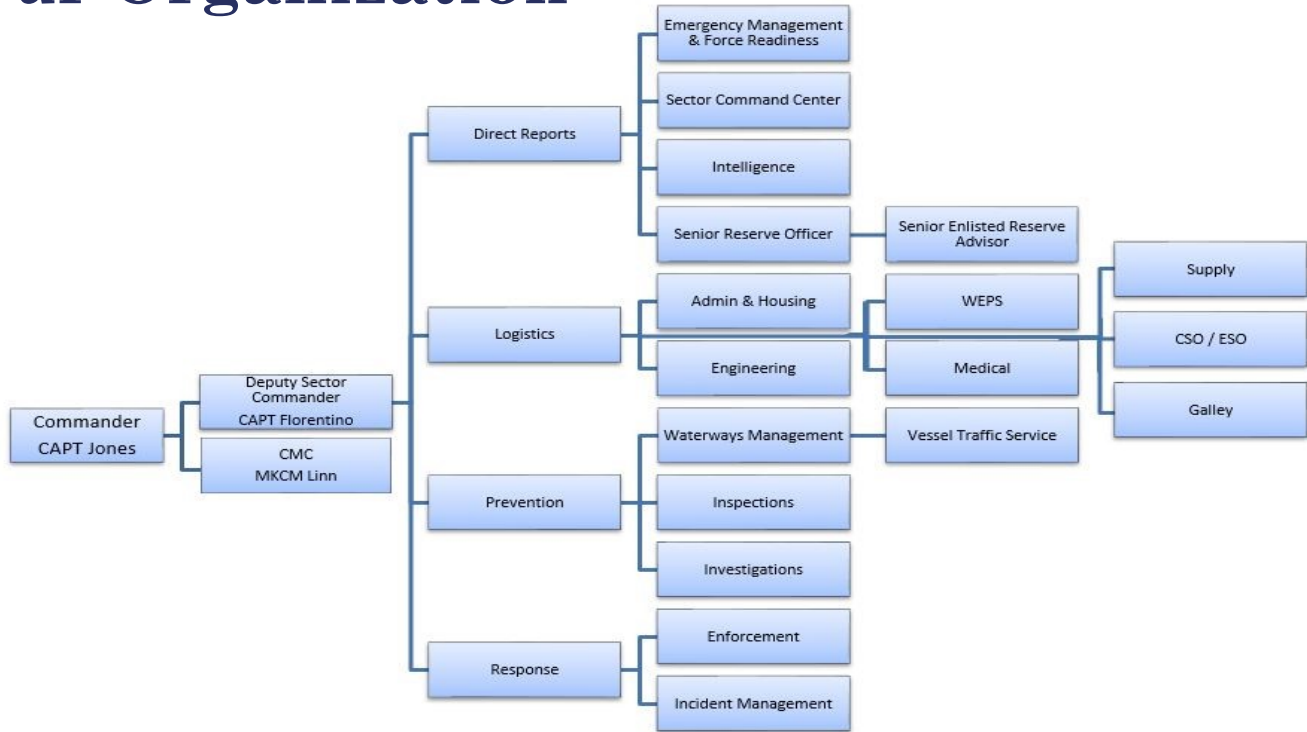
REVERE: We honor people's dignity and hold respect as an ideal that should come first in all interactions. Disrespect and harassment will not be tolerated. Exclusionary and divisive behaviors should never go unchallenged whether on and off duty. We will strive to build a culture of community and inclusion. Our charge is to care for and protect our shipmates. We aspire to be a family, even in the face of uncomfortable or dangerous situations. We are stewards of our nation's image and should lead the way. We are the beacon for all others to follow and emulate.

Captain Amy E. Florentino
Deputy Commander

Captain Anthony R. Jones
Commander

MKCM Robert W. Linn
Command Master Chief

Our Organization

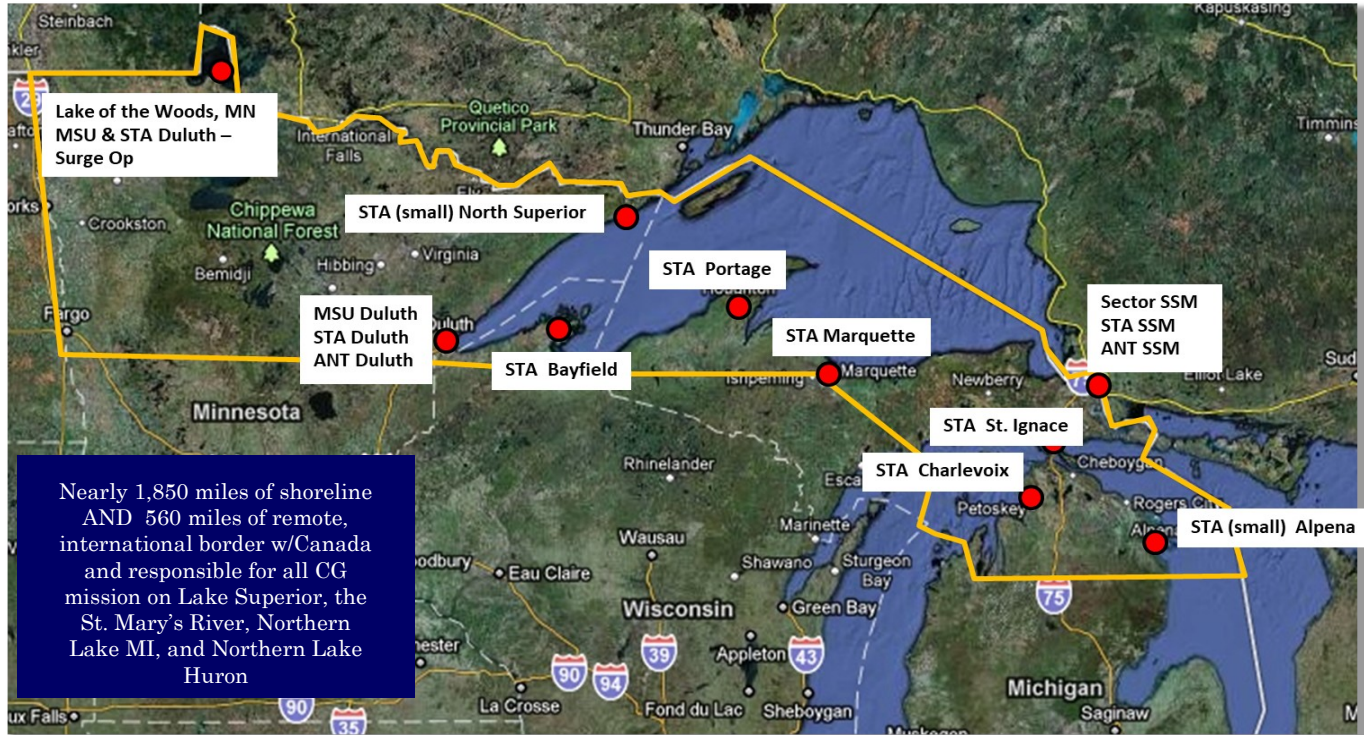


Sault Sainte Marie Campus



Sector Units	Tenant Units
Sector Sault Staff	KATMAI BAY – D9 Unit
Command Center	BUCKTHORN – D9 Unit
Vessel Traffic Service	Electronic Support Detachment – Base Cleveland Unit
STA Sault Ste. Marie	Maintenance Augmentation Team – Base Cleveland Unit
ANT Sault Ste. Marie (located ~5 miles from Sector)	Industrial Production Facility – Base Cleveland Unit

Where We Are



Relative Responsibility



Who We Are

Station Bayfield, WI
 Station Charlevoix, MI
 Station Duluth, MN
 Station Marquette, MI
 Station Portage, MI
 Station Sault Sainte Marie, MI
 Station St. Ignace, MI
 MSU Duluth, MN
 ANT Duluth, MN

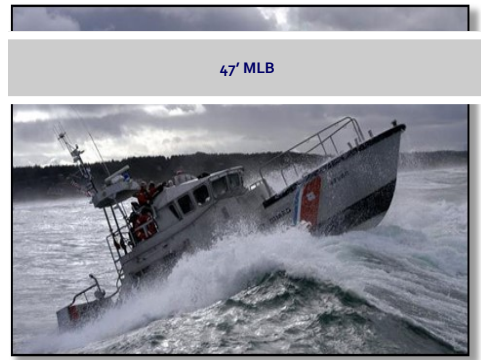
ANT Sault Sainte Marie, MI

Tenant and Supporting Units

USCGC Buckthorn
 USCGC Katmai Bay
 Base Cleveland
 IPD Sault Sainte Marie
 ESD Sault Sainte Marie
 CGIS
 Coast Guard Exchange



29 RB-SII



47 MLB



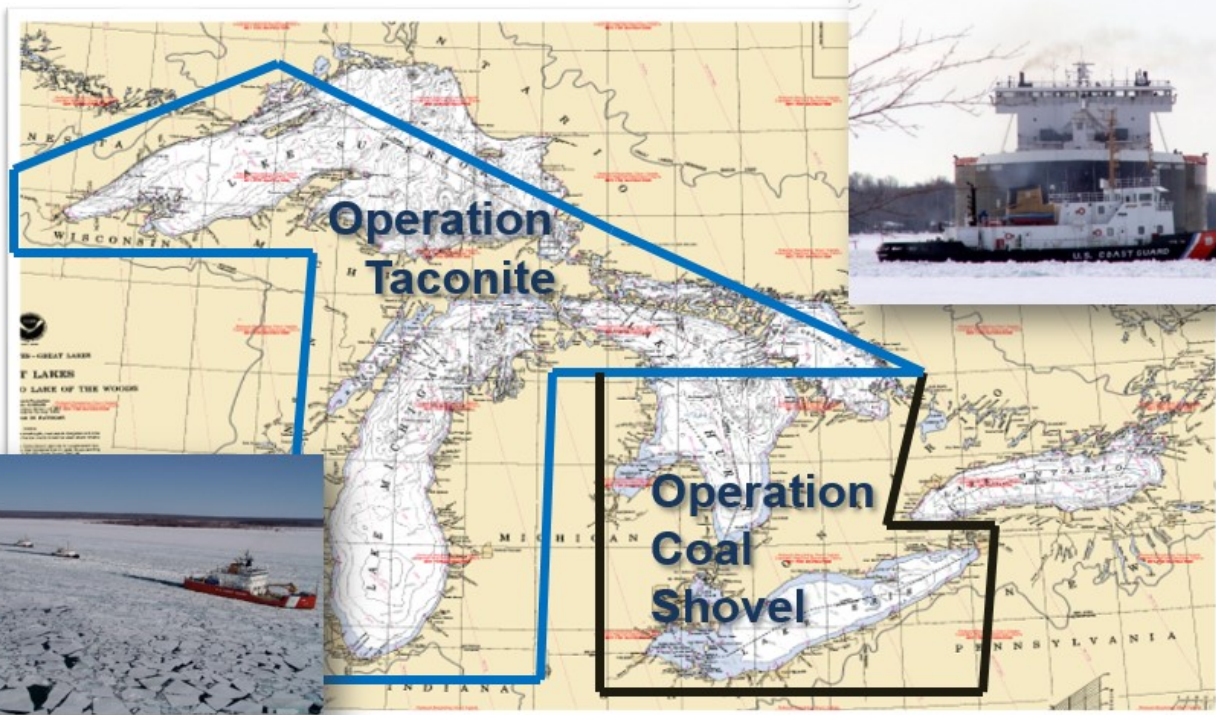
45 RB-M



SP-CAIR

Operation Taconite

USCG's Largest Domestic Icebreaking Op



What We Did — FY2019

Vessel & Facility Inspections: 218

- 94 Inspected Vessels
- 40 Regulated Facilities

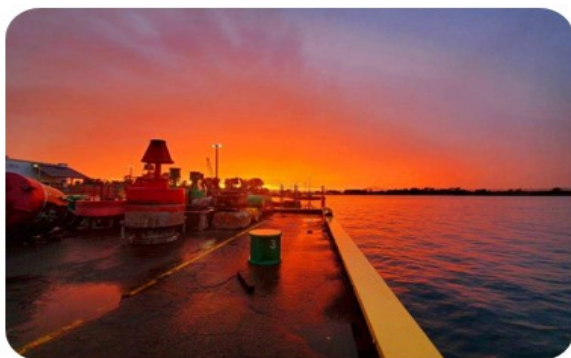
Reportable Marine Casualties: 29

Marine Events Applications: 63

- 23 Issued

Law Enforcement Boardings: 1,822

Marine Environmental Response: 81



Search & Rescue Cases: 302

- 41 Lives Saved
- 279 Lives Assisted
- \$376K Property Saved
- \$4.9M Property Assisted

U.S. Integrated Cross-border Maritime Law Enforcement Operations (“Shiprider”)

Northern Great Lake Facts

Soo Locks Critical Infrastructure

- 70-80 Million Metric Tons of bulk product annually
- Economic impact → 3% US GDP & 55% of 8-state Great Lakes economy
- 100% of US mined iron ore passes through Soo locks

Two top 25 ports in US (cargo volume)

- Twin Ports of Duluth, MN & Superior, WI
- Two Harbors, MN

Environmental Treasure

- Lake Superior → largest body of fresh water on Earth

Vast International Boundary

- 560 miles of Great Lakes border
- 700 miles of federally navigable International boundary waters



The Soo Locks

Sault Sainte Marie is home to the Soo Locks – a canal system that uses water to raise and lower ships and other vessels six meters between Lake Superior and Lake Huron levels. Built 160 years ago, the locks provide passage for more than 8 million tons of grain, coal, iron ore and other important natural resources distributed throughout the Great Lakes region. Visitors can trace that path and explore the river aboard a Soo Locks Boat Tours vessel. Back on land, a picturesque park and informative visitor center is found at the Soo Locks complex. Visit Museum Ship Valley Camp – a retired shipping freighter that now houses hundreds of nautical exhibits – and the Great Lakes Shipwreck Museum at the Whitefish Point Lighthouse. Climb to the top of Point Iroquois Lighthouse’s nearly 20-meter tower for sweeping views of Lake Superior and Sault Sainte Marie.



NATIONAL HISTORIC LANDMARK

The Soo Locks are one of less than 3,000 National Historic Landmarks in the entire country. It earned this special designation due to its contributions to the nation's industrial and commercial development since the 1850s and the architectural significance and integrity of many of its structures and buildings dating back to the late 19th Century. To maintain these historic elements while incorporating necessary technological and safety improvements, the U.S. Army Corps of Engineers works closely with the National Park Service and State Historic Preservation Office



US Army Corps of Engineers
Detroit District

New Lock at the Soo

Current total project cost \$922.4 million (Fiscal Year 2019 Price Level)
\$241.6 million funded to date (25 percent funded)

May 2020



- Construction of a new lock with dimensions equal to the Poe Lock (1,200 feet long x 110 feet wide) will provide much needed resiliency in the Great Lakes Navigation System.
- Nearly all domestically produced advanced high strength steel used to manufacture products like automobiles and appliances is made with taconite (iron ore) that transits the Poe Lock.
- A 30 day outage of the Poe Lock has a greater impact on the nation than a 30 day outage of any other USACE lock.
- The New Lock is expected to provide annual benefits of \$77.4 million and a benefit-cost ratio of 2.32 at a 7.0 percent discount rate.



A Quick History of the Soo Locks

1798
First Lock on St. Marys River

To support the growing fur trade, the Northwest Fur Company built a canal lock on the north shore of the river. This lock was approximately 40 feet long and 9 feet wide.



1855
"State Lock" opens

Built in only two years this tandem lock used two chambers each measuring 350' X 70' and each with a lift of 10 feet to bypass the rapids. This lock was operated and maintained by the State of Michigan.



1896
Poe Lock opens

Built on the site of the former State Lock, the Poe lock was 800 feet long and 100 feet wide.



1919
Sabin Lock opens

An exact twin of the Davis Lock, it was begun even before the Davis Lock was finished. It is also the only lock on the site named for a civilian, Louis Sabin, the only civilian to ever serve as the Detroit District Engineer.



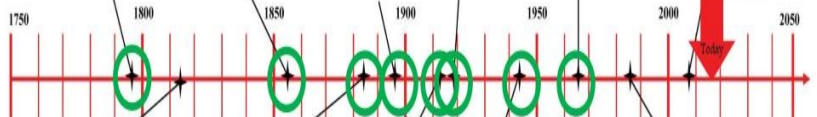
1968
Second Poe Lock opens

As the design for a new lock neared completion it became clear that an even larger lock would be needed as boats measuring 1,000 feet long were being planned. Originally set to be 1,000 feet long and 100 feet wide it was redesigned to its current size of 1,200 feet long and 110 feet wide.



2009
Preparatory work for new lock completed

Funds were provided to build offer dams at each end of the Sabin Lock and to dredge the approach channels to 28.5 feet.



1814
Lock Destroyed

During the War of 1812 American forces destroyed the British lock. Goods had to be unloaded and stored in warehouses at either end of the falls and transported on a railway running down Portage Avenue.



1833
Wietzel Lock opens

This lock was the first one to fill and empty the chamber through openings in the floor, reducing turbulence in the lock. During its construction in 1831 the entire facility was transferred from the state to the U.S. Army Corps of Engineers.



1914
Davis Lock opens

At 1,350 feet long the Davis lock held the honor of being the longest lock in the world when it opened.



1943
MacArthur Lock opens

Opening of a new, deeper lock became a matter of national security during World War II and the MacArthur Lock was built in 15 months. During the war thousands of soldiers were stationed at the Soo to protect the locks and the flow of iron ore.



1986
New Lock Authorized

As part of the Water Resources Development Act, Congress authorized the construction of a new lock to be built on the site of the Sabin and Davis Locks. This new lock will be the same size as the Poe Lock.





Ombudsman

Mrs. Lisa

Repa

Ombudsman Program

Purpose

An Ombudsman serves as a link between a Coast Guard command and the families of the command. An Ombudsman can assist families in locating resources, communicate information from the command to the families, and take concerns of families to the command.

Program Confidentiality

Discussions of the Ombudsman Program may be confidential except family violence that must be reported. An Ombudsman must be able to distinguish between issues suitable for public discussion and those requiring confidentiality.

Telephone Number: 906-630-2295

Email: saultstemarieombudsman@gmail.com

Role: Work as liaison between Command and families, keeps families informed of Sector events & connects them to CG resources available

CG Sault Ste. Marie Community Facebook Page:

<https://www.facebook.com/groups/143440139048999/>



Housing

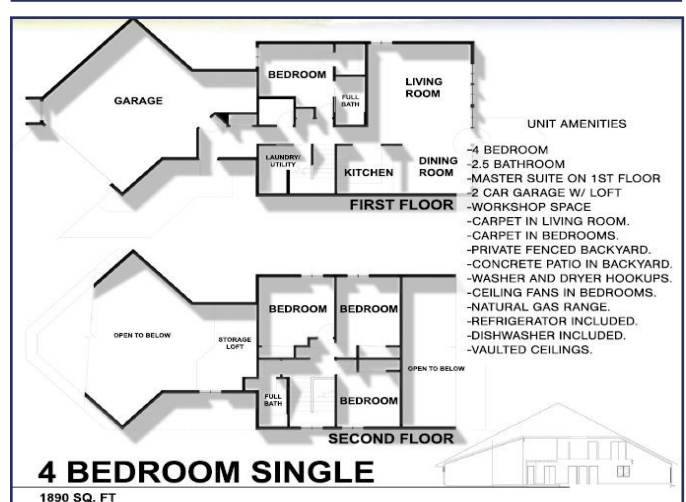
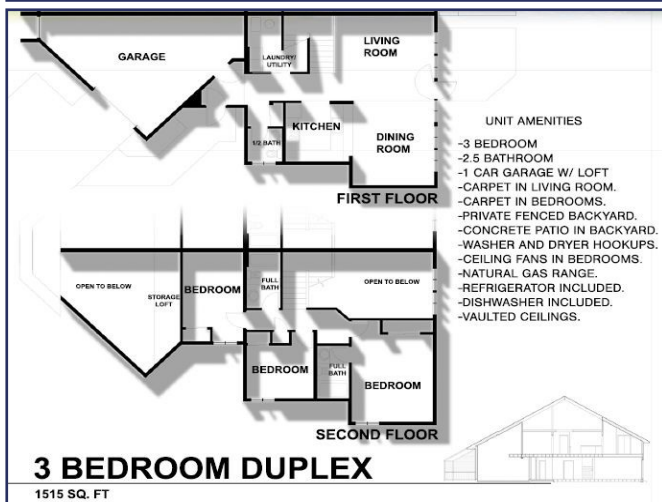
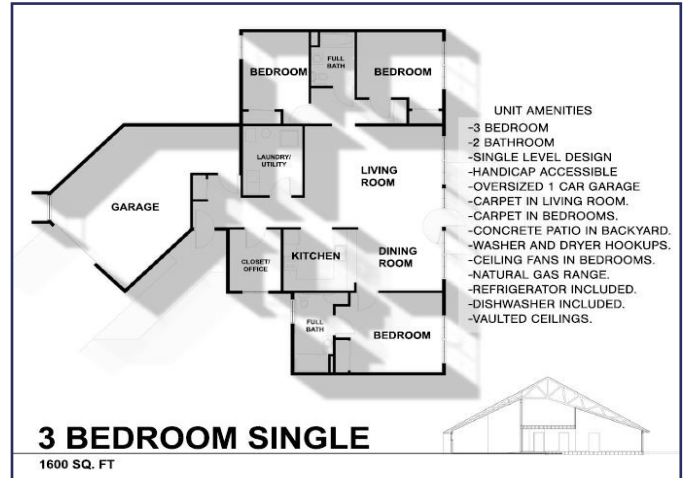
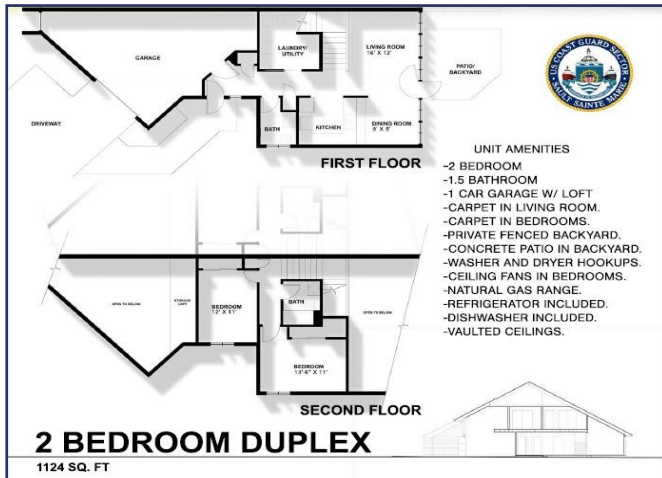
Sector Sault Sainte Marie Housing Division is available to help you find a place to live. Single or married, Coast Guard Owned Housing or rentals on the economy, please contact reach out for housing and house hunting questions and assistance:

CS1 Ronald Rice Sector Sault Ste. Marie Housing Representative (906) 632-7608
 Housing Administration (Check In & Check Out)
 Local Owned Housing Maintenance Rep.
 BAH Primary Military Housing Office
 UPH Manager, Rental Referral Manager

CWO2 Joshua Dixon Sector Sault Ste. Marie Local Housing Officer (906) 635-3206
 DCC Dana Tull Owned Housing Maintenance Coordinator (216) 902-6290
 Mr. Dave Bolanz Area Housing Officer, Base Cleveland (216) 902-6291

Helpful websites:

Sector Sault Ste Marie Housing Office ** <http://www.ahrn.com> ** <http://www.homes.mil>



Sector Sault Sainte Marie Housing — Tahoma Way and Seminole Drive



Utilities

	<p>Cloverland Electric Cooperative 2916 W. M-28 Dafer, MI 49724</p>	<p>866-366-4357 www.cloverland.com</p>
	<p>DTE Energy 1125 E <u>Easterday Ave</u> Sault Sainte Marie, MI 49783</p>	<p>906-632-3347 www.dteenergy.com</p>
	<p>Spectrum 2682 <u>Ashmun St</u> Sault Sainte Marie, MI 49783</p>	<p>866-874-2389 www.spectrum.com</p>
	<p>City of Sault Ste Marie 225 East Portage Ave Sault Sainte Marie, MI 49783</p>	<p>906-632-5715 www.saultcity.com</p>
	<p>Verizon 2861 1-75 Business Spur Sault Sainte Marie, MI 49783</p>	<p>906-259-0466 www.teamwireless.com</p>
	<p>AT&T 2972 W 9th Street Sault Sainte Marie, MI 49783</p>	<p>906-253-1595 www.att.com</p>

Local Schools

Sault Area Public Schools:
<http://www.saultschools.org>

St. Mary's Catholic School:
<http://stmarysup.org/>

Joseph K. Lumsden Bahweting School:
<http://www.jklschool.org>

Rudyard Area Public Schools:
<http://rudyard.eupschools.org>

Brimley Area Public Schools:
<http://brimley.eupschools.org>

Pickford Area Public Schools:
<http://pickford.eupschools.org>

Higher Education

Lake Superior State University
<http://www.lssu.edu/>

Bay Mills Community College
<http://www.bmcc.edu>

Algoma University (Canada)
<https://www.algomau.ca>

Sault College (Canada)
www.saultcollege.ca



Dr. Hanley,
LSSU President
and CAPT Jones,
Sector
Commander



LSSU repeats as among best colleges in US News & World Report rankings

Reported by TV6 News Team 9/14/2020



© Provided by Marquette WLUC

SAULT STE. MARIE, Mich. (Press Release/WLUC) - Lake Superior State University again ranks as one of the best institutions in higher education, according to U.S. News & World Report.

The 2021 college rankings singled out LSSU in three categories that it had also made in 2020: best regional colleges in the Midwest; top public schools, regional colleges, in the Midwest; and best undergraduate engineering programs nationwide.

For 2021, LSSU tied for 46th best regional college in the Midwest, from 76 ranked; in 2020, it rated 45th from 70 ranked. There are 366 regional colleges—185 private, 170 public, and 11 for-profit—in the country, focusing on undergraduate education and granting less than 50 percent of degrees in liberal arts disciplines, per *U.S. News & World Report*. LSSU also repeated as third in top public schools, regional colleges, Midwest. LSSU rose four slots in undergraduate engineering nationwide: tying for 157 out of 220 for 2021, up from a tie for 161 out of 210 for 2020.

LSSU also tied for 46th in top performers on social mobility in regional colleges in the Midwest out of 76 ranked.

The university was included unranked among 481 institutions listed in a category new to the influential annual ratings: undergraduate computer science programs nationwide.

“These findings further validate part of our mission to equip graduates with the knowledge, practical skills, and inner strength to craft a life of meaningful employment and personal fulfillment while enhancing the quality of life in the Great Lakes region and the larger world,” said LSSU President Dr. Rodney S. Hanley. “We appreciate substantiation of what has been and will always be among our many hallmarks: providing excellence and innovation in teaching and learning, plus offering a wide range of opportunities for growth academically, professionally, culturally, and socially.”

U.S. News & World Report's Best Colleges rankings for 2021 assessed 1,452 U.S. bachelor's degree-granting institutions on 17 measures of academic quality, including graduation and retention rates, social mobility, expert opinion/peer review, faculty resources, financial aid, and alumni giving, indicate press materials.

Youth Activities

Sports:

- Soo Soccer Association (Sault Youth Soccer)
- Sault Giants Football
- Sault Michigan Hockey Association
- Sault Ste. Marie Little League
- Hiawatha Skating Club (Figure Skating)
- Black Dragon Martial Arts Club
- Kuk Sool Won of Sault Ste. Marie (Martial Arts)
- Sault Lacrosse
- Sault Ste. Marie Gymnastics Club (Canada)
- Lake Superior State Univ Aquatics Program
- Strathclair Farm Equestrian Lessons (Canada)
- John Rhodes Community Center Aquatics (Canada)
- Sault Country Club Golf Lessons
- Rudyard Consolidated Community School Services Swim Lessons

Dance/Performing Arts:

- All Styles, All Occasions Dance Studio
- Allure Dance Company
- Academy of Performing Arts
- Soo Little Theatre (Performing Arts)

Other:

- Chippewa County 4-H Club
- St. Joseph's Parish Catholic Youth Group
- Sault Wesleyan Church Youth Alive
- Lake Superior State Univ Summer Science Camps
- Big Bear Summer Recreation Program
- EarlyON Child and Family Drop-In Activity Centers (Canada)



For information on Child Care Subsidy send an email to uscoastguardchildcare@gsa.gov

Medical Resources

TRICARE: Active duty service members are required to enroll in TRICARE Prime Remote – East Region. Contact your sponsor to engage with HS Staff for guidance on enrollment and local health care options. Personnel assigned to Duluth AOR will enroll in TRICARE Prime Remote – West Region

Health Links

MilConnect DoD Portal: <https://milconnect.dmdc.osd.mil/milconnect/>

Beneficiary Web Enrollment Website:

<https://www.dmdc.osd.mil/appj/bwe/indexAction.do>

My TRICARE online: http://www.mytricare.com/internet/tric/tri/mtc_nbene.nsf

Tricare Online: <https://www.tricareonline.com>

CGBI status: <http://cgbi.osc.uscg.mil>

PHA: <https://data.nmcphc.med.navy.mil/pha/>

LHI: <https://lhi.care/start>

Dental (ACN request): <https://secure.addp-ucci.com/ddpddw/adsm/care-remote.xhtml>

Nurse Advice Line: 1-800-TRICARE (874-2273)

Supplement questions: <https://www.opss.org/>

Fitness information: <https://www.hprc-online.org/>

Smoking cessation: www.ucanquit2.org

Work Life: <http://www.uscg.mil/worklife/default.asp>

Mail order Pharmacy: <http://www.express-scripts.com/TRICARE/>

Physical Fitness

Sector Sault Sainte Marie Campus

- Cardio machines, weights, sauna

Coast Guard Community Center Gym

- Cardio machines, weights, open space for yoga

Lake Superior State University—Norris Center

- Free admission with ID card, reduced family rates, gym, indoor pool, indoor ice rink, indoor track, racquetball, tennis courts, rock climbing wall, sauna

Pullar Ice Arena

- Ice rentals, public skating

Up North Nutrition and Gym 906

- Reduced monthly rates, full gym, fitness classes, tanning, on-site nutritionist

Big Bear Area

- Reduced monthly rates, full gym, fitness classes, indoor track, indoor ice rinks, outdoor nature trails, snowshoe rentals

Anytime Fitness

- Reduced monthly rates, full gym, fitness classes

This doesn't even include what Canada has to offer!

Sector Morale

Morale committee meets every month! Join us!

<https://cg.portal.uscg.mil/units/sectorsaultstemarie/SitePages/Morale.aspx>

Some of our morale events!

Holiday parties

Snow Tubing/ Skiing & Snowboarding Trips

Hiking Trips

Photo Contests

Available Morale Gear

Sporting Equipment

Camping Equipment

Coolers, Cards, and Poker Chips

Ice Shanty

Cross Country Skis

Did you know the Michigan Paranormal Convention is held in the Soo every year?



A Few Local Attractions

Soo Locks Boat Tours

<http://www.saultstemarie.com/attractions>

Searchmont Ski Resort

<http://www.searchmont.com>

I-500 Snowmobile Race

<http://www.i-500.com>

Tahquamenon Falls

<http://www.saultstemarie.com/attractions>

Mackinac Island

<http://www.mackinacisland.org>

Casinos

<http://www.kewadin.com>

<http://baymillscasino.com>

Golf Courses

<http://www.golflink.com/golf-courses/mi>

Minor League Hockey Teams

<https://sooeagles.net/pullar-stadium>

<https://soogreyhounds.com>

Wildlife Parks

<http://garlynzoo.com>

<http://oswaldsbearranch.com>

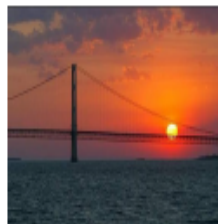
Lake Superior's sparkling fresh water is enjoyed by swimmers, boaters and anglers. Its beaches and parks offer the perfect location for a leisurely walk or waterfront relaxation. Mother Nature is also on display at nearby Tahquamenon Falls State Park, where thundering waterfalls cascade over rocks. The Upper Falls drop more than 15 meters to the river below. The Lower Falls provide a succession of smaller falls, each more beautiful than the last. The park features hiking trails, rowboat rentals, and food and gifts for purchase. Go deep into the woods in the Hiawatha National Forest, the perfect place for hiking and wildlife viewing.

The 7 Wonders of Michigan



1. The Great Lakes

Carved from the glaciers more than 10,000 years ago, with a shoreline of more than 11,000 miles and a basin-full of 30 million devotees, the winner of the 7 Wonders of Michigan contest is probably no surprise. They are the Great Lakes, and they are synonymous with Michigan.



2. Mackinac Bridge: On the day it opened in November of 1957, the "Mighty Mac" became the longest suspension bridge in the world. Nearly 70 years later, it has been eclipsed in length only twice.



3. The Grand Hotel:

The world's longest porch. That attribute alone makes Grand Hotel of Mackinac Island more than deserving of recognition as one of the 7 Wonders of Michigan. At 660-feet long, this marvel of Gilded Age opulence has held court over manicured lawns and resort-style summer relaxation for more than 125 years.

4. Sleeping Bear Dunes National Lakeshore:



"Long ago, along the Wisconsin shoreline, a mother bear and her two cubs were driven into Lake Michigan by a raging forest fire. The bears swam for many hours, but eventually the cubs tried and lagged behind..."

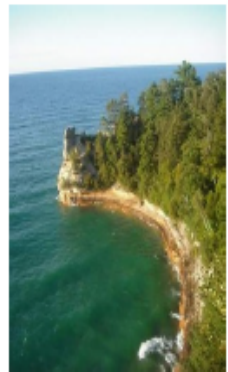


5. Mackinac Island

English writer Harriet

Martineau declared in 1836 that Mackinac Island was "the wildest and tenderest little piece of beauty that I have yet seen on God's earth."

6. Pictured Rocks National Lakeshore:



Some of the most sublime and commanding views in nature.



7. Tahquamenon Falls:

The second-largest state park in Michigan is home to one of the largest waterfalls in the eastern United States, but Tahquamenon Falls comes first in our book for pure, stately awesomeness.

Seven Million Acres of Breathtaking Autumn Brilliance

When USA Today asked its readers to choose their favorite destination for fall color, they voted Michigan's Upper Peninsula Number One. From mid-September to mid-October, the U.P.'s seven million acres of hardwood and pine forests are drenched in fiery hues of yellow, orange and red mixed with rich green and brown. Autumn is breathtaking.

The leaf show begins when our daylight hours shorten in mid-September and the night air grows crisp. First, there's a spatter painting of scarlet reds and sunny yellows amid acres of green. Then, almost overnight, the hardwood forests explode in reds, oranges, yellows, purples, browns and greens. The colors intensify and peak by mid-October. But this breathtaking show continues for a couple more weeks, especially along tree-canopied roads near the shorelines of Lakes Huron, Michigan and Superior.



Marquette Peninsula • Copper Harbor, Eagle Harbor, Delta River, Colonial Junction, Hessel, Lake Umbagog, Elk River



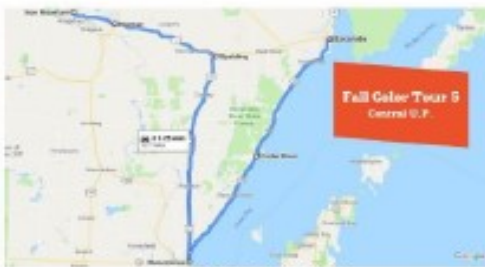
Superior, Copper Harbor, Ontonagon, Ishpeming, Marquette, Delta River, Elk River



Hessel, Ishpeming, Delta River, Copper Harbor, Ontonagon, Marquette, Elk River, Superior



Big Lake, Marquette, Ishpeming, Ontonagon, Delta River, Copper Harbor, Marquette, Elk River



Ishpeming, Marquette, Ishpeming, Ontonagon, Delta River, Copper Harbor



Delta River, Ishpeming, Marquette, Delta River, Copper Harbor, Marquette, Elk River



Marquette, Delta River, Ishpeming, Ontonagon, Delta River, Copper Harbor



Ishpeming Peninsula, Ishpeming, Delta River, Copper Harbor, Marquette, Elk River



Peninsula, Ishpeming, Delta River, Copper Harbor, Marquette, Delta River, Copper Harbor



Delta River, Ishpeming, Delta River, Copper Harbor, Marquette, Delta River, Copper Harbor

Native Americans were **Sault Sainte Marie's** first residents, where they lived on the abundant foods found in the waters and woods surrounding the city. Tribes from near and far found a gathering place in **the Soo**. Today, visitors participate in this heritage by attending annual Pow Wow celebrations, visiting local museums and listening to native storytellers share the lives of their ancestors here at Bahwating – the native name for Sault Sainte Marie. Ascend the Tower of History's 64 meters by swift elevator to marvel at the city stretching out below you all the way to the Canadian wilderness, then explore the two-level museum's informative exhibits devoted to area culture.



TAHQUAMENON FALLS

The Tahquamenon Falls State Park encompasses a total of 46,179 acres of land making it Michigan's second largest state park.

Canadian Travel

With a larger population, expanded leisure, retail and cultural opportunities are abundant in our twin city of Sault Ste. Marie, ON

Travel to Sault Ste. Marie, Canada + 50 mile radius: Members must complete a Foreign Travel Request form, CG 5000A.

- Authorization is good for one year.**
- Recommend obtaining a passport or enhanced driver's license for self and dependents prior to arrival.
- Forms & instructions for completion: • https://cg.portal.uscg.mil/sites/externaldata/Forms/CG_5000A.PDF
• <http://cglink.uscg.mil/22ee68e8>
- Sault Canada has movie theatre, mall, skiing/snowboarding, indoor pool with waterslide, curling, major box stores (e.g., Home Depot, Best Buy), convention center (GFL Gardens), casino, YMCA, additional higher education (Algoma University).

Helpful Telephone Numbers

<i>Name</i>	<i>Telephone</i>
Sector Command Master Chief	906-635-3214
Sector Administration Office	906-635-3278
Sector Medical Office	906-635-3226
Sector Housing Office	906-632-7608
Sector Command Center	906-635-3239
Sector Education Service Officer	906-635-3355
Sector Ombudsman	906-635-2350
Sector Weather/Contingency Line	906-635-3311
Coast Guard Exchange (Local)	906-635-3275
Chaplain	313-316-0609
Coast Guard Help Desk	1-855-243-4948
Coast Guard Support	1-855-247-8778

Social media advertising is the method of choice for local businesses, governmental and community organizations. Don't be surprised if you don't find something on a Google search. Most events, activities, festivals, etc. are most likely advertised on Facebook.

Helpful Social Media Sites

<i>Name</i>	<i>Description</i>
Downtown Sault Ste. Marie, Michigan	Downtown Development Authority official Facebook Site
I Love Sault Ste. Marie, Michigan	Marketing Facebook Page for City of Sault Ste. Marie, MI
City of Sault Ste. Marie, MI	SSM City Government's official Facebook – Municipal Info
Sault, Mi Area News, Views, Rants & Raves	Local Facebook Forum; all the local gossip
The City of Sault Ste. Marie	Sault Canada's official Facebook page
Downtown Sault Ste. Marie Squared	Marketing Facebook Page for Twin Saults
sault.ste.marie	Sault Canada's official Instagram page
Michigan UP North	Community Tourism Facebook page
Pure Michigan	State of Michigan's official Tourism Facebook page
Lake Superior State University	LSSU's official Facebook page
U.S. Coast Guard Sector Sault Ste Marie	Sector's official Facebook page
U.S. Coast Guard Great Lakes	District Nine's official Facebook page